

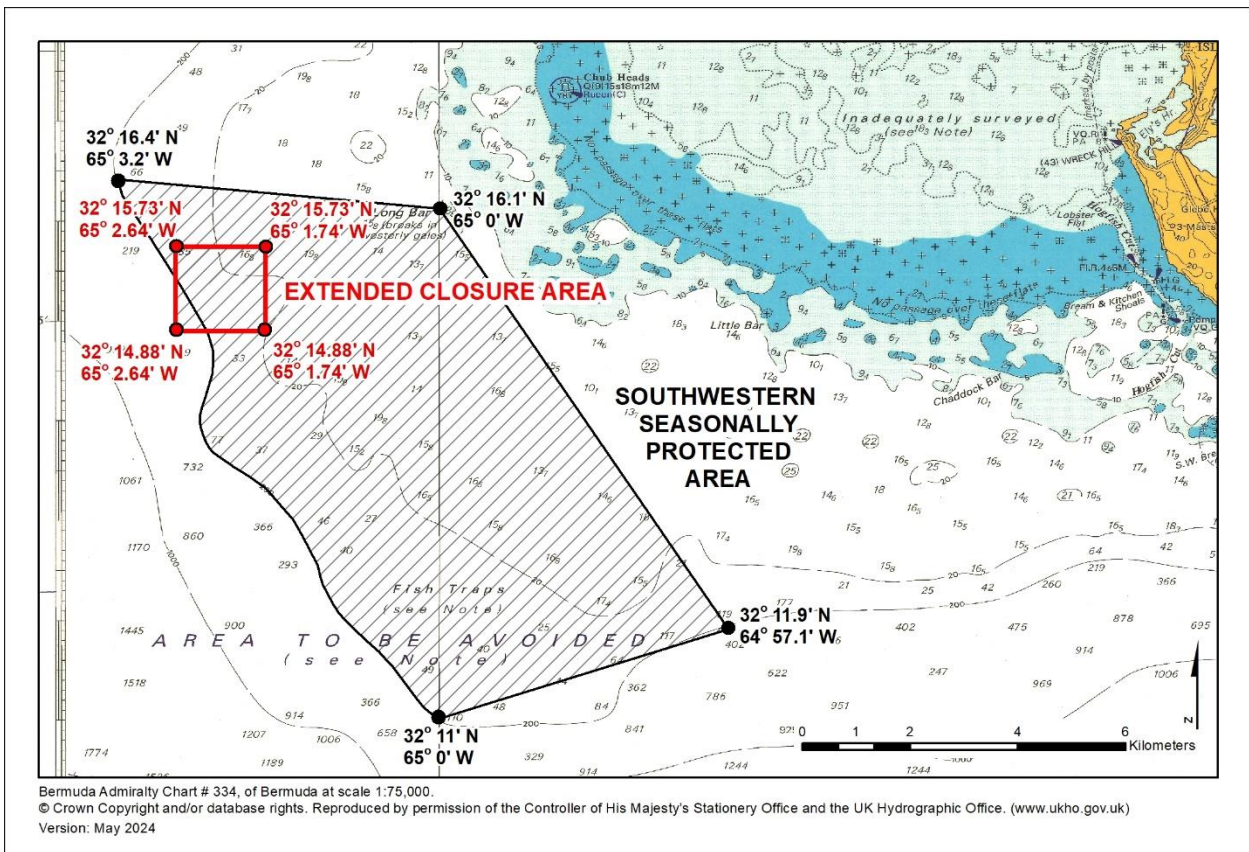
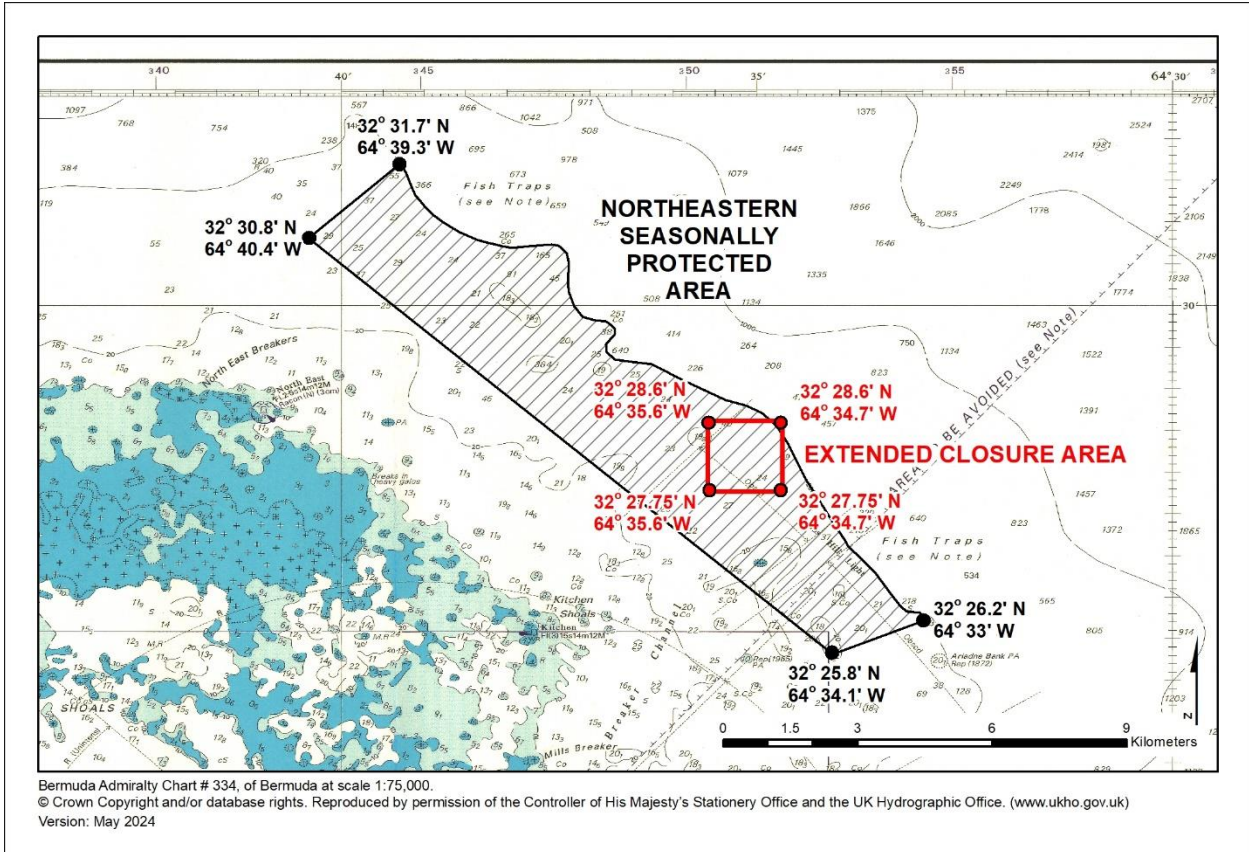


# GOVERNMENT OF BERMUDA

The Ministry of Public Works & Environment reminds commercial and recreational fishers that fishing in the Seasonally Protected Areas, also known as the “Hind Grounds” and “Grouper Grounds”, will be prohibited from 15 April through 14 August 2026 in order to protect spawning Red Hinds and Black Groupers. Also note that while the Seasonally Protected Areas open on 15 August 2026, the Extended Closure Areas around important Black Grouper aggregations will remain closed to fishing until December 1, 2026. See the maps below.

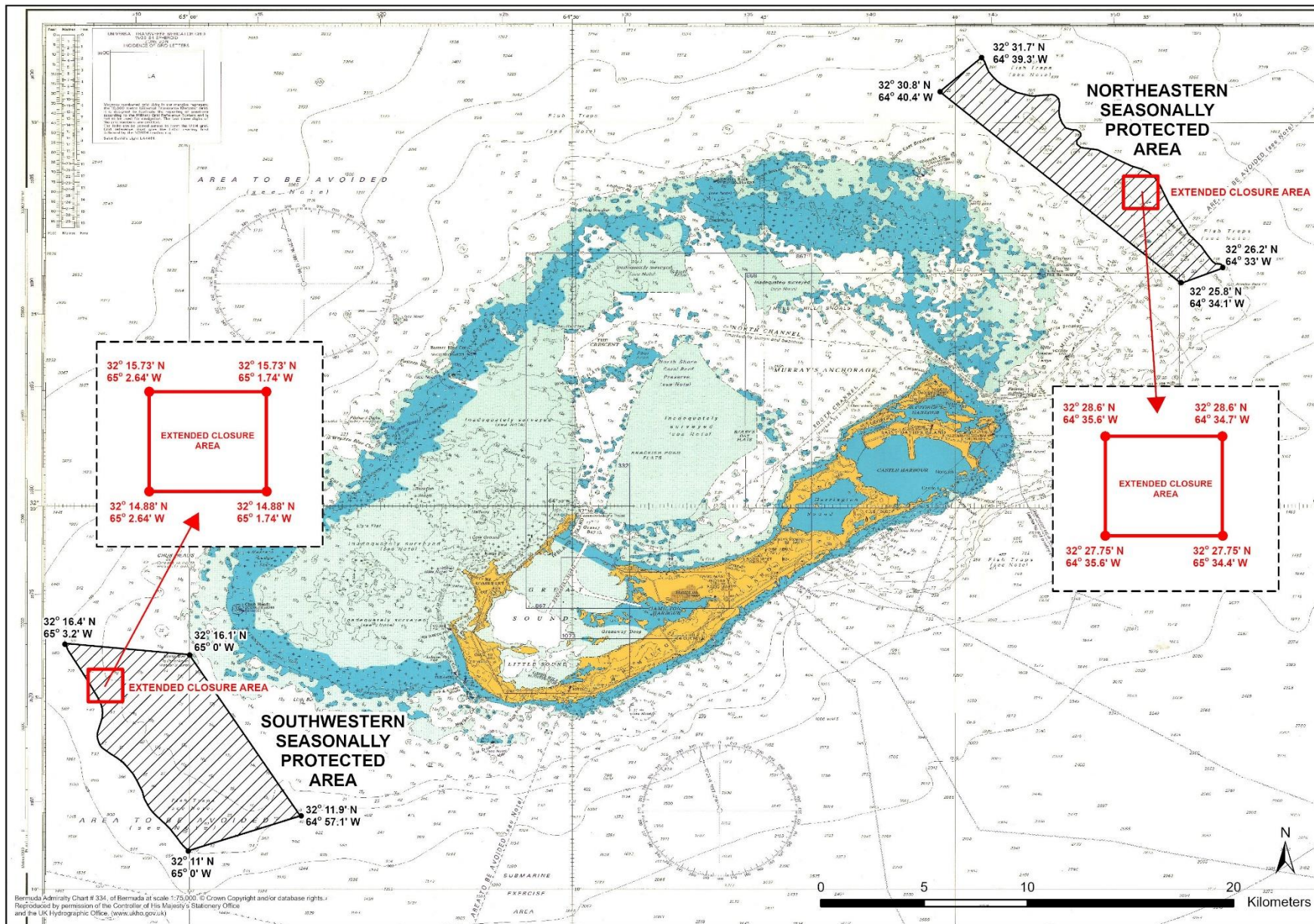
For more information contact the Department of Environment and Natural Resources, Marine Resources Section at 293-5600 or [fisheries@gov.bm](mailto:fisheries@gov.bm)

## FISHERIES SEASONALLY PROTECTED AREAS





GOVERNMENT OF BERMUDA



Bermuda Admiralty Chart # 334, of Bermuda at scale 1:75,000. © Crown Copyright and/or database rights. Reproduced by permission of the Controller of His Majesty's Stationery Office and the UK Hydrographic Office. (www.ukho.gov.uk)