

Current Access to Testing, Vaccination & Treatment: An Overview

WHY TEST?

- » Travel based requirements ¹
- » Presence of COVID-19 symptoms
- » Close contact with a confirmed or probable COVID-19 infected person ²
- » Ministry of Health requirements or recommendations (e.g. surgery, school or workplace requirement) ³

Common symptoms of COVID-19 include:

- » Body aches
- » Fever or chills
- » Fatigue or headache
- » Cough, congestion or runny nose
- » Loss of taste or smell
- » Shortness of breath or difficulty breathing
- » Sore throat, nausea, vomiting, or diarrhea



These may occur whether vaccinated or unvaccinated:⁴

WHY VACCINATE?

- » Reduces risks of infection
- » Reduces anxiety and fear
- » Reduces risk of spreading the virus
- » Makes it harder for the virus to replicate and mutate
- » Makes it harder for the disease to spread in communities
- » Reduces risk of becoming seriously ill or dying due to COVID-19


Severe complications of COVID-19 include:

- » Respiratory Distress
- » Pneumonia
- » Neurological Complications
- » Septic Shock
- » Cardiovascular Complications
- » Acute Liver Injury
- » Acute Kidney Injury
- » Pancreatic Injury
- » Cytokine Storm



These may occur whether vaccinated or unvaccinated:

TYPES OF COVID-19 TESTS AVAILABLE IN BERMUDA

	Reverse Transcription Polymerase Chain Reaction (RT-PCR)	Isothermal Amplification (IA) and Transcription Mediated Amplification (TMA)	Antigen ⁵	Antibody
 Sample Type	Nose Throat Saliva	Nose Throat Saliva	Nose Throat Saliva	Finger Prick Blood Draw
Test Detects	SARS-CoV-2 Viral RNA	SARS-CoV-2 Viral RNA	SARS-CoV-2 Viral Protein	SARS-CoV-2 Antibodies
Results Period	1-2 Days	45-60 Minutes	15-20 Minutes	1-2 Days
Positive Result Meaning	Current Infection	Current Infection	Current Infection	Previous Infection

VACCINES AVAILABLE IN BERMUDA

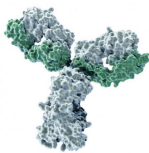


Vaccine Type: mRNA



Vaccine Type: Adenovirus Vector Vaccine

OTHER CORONAVIRUS-RELATED TREATMENTS AVAILABLE IN BERMUDA



Monoclonal Antibodies



Oxygen and Respirators



Mental Health Teams



Healthy Outlets



Beliefs and Positivity



Anti-inflammatories



Effective Masks

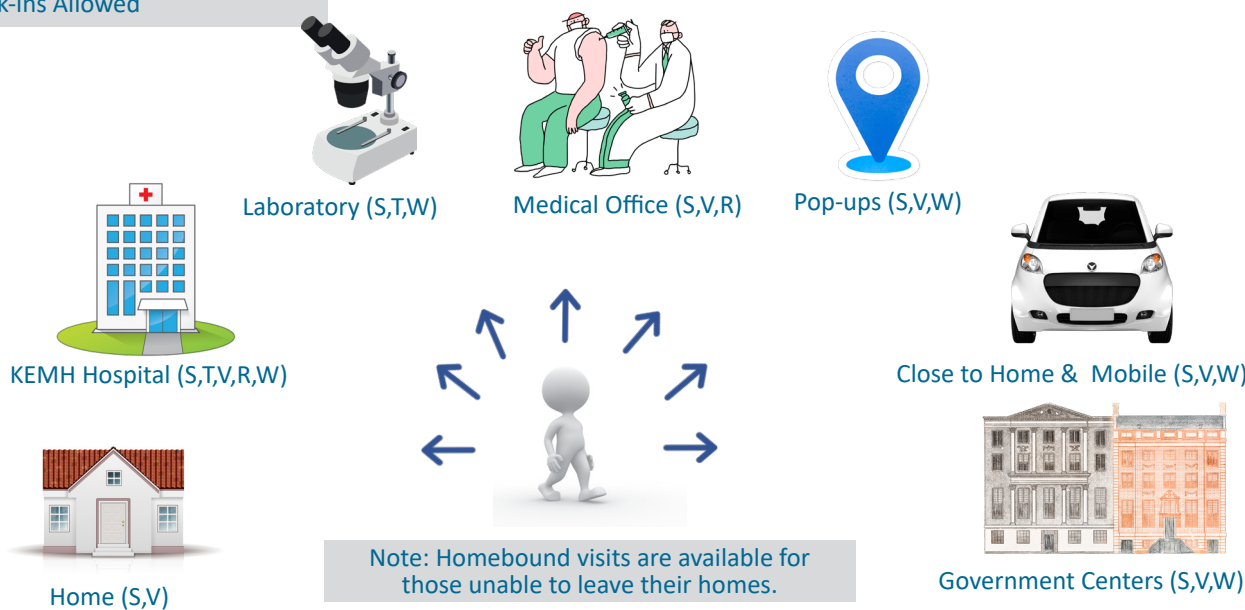


Social Distancing

Image & Illustrations Credit:
• Top Health Clinic Co UK, 2021, "Flowflex Antigen Test" via tophealthclinic.co.uk/Home/AntigenTest
• REGEN-COV, 2021, "Regen-COV Injection" via www.regencov.com/hcp
• COVID Vaccine & COVID Swab, 2020-2021 "COVID-19 Illustrations" via rawpixel.com, via [freepik.com](https://www.freepik.com)

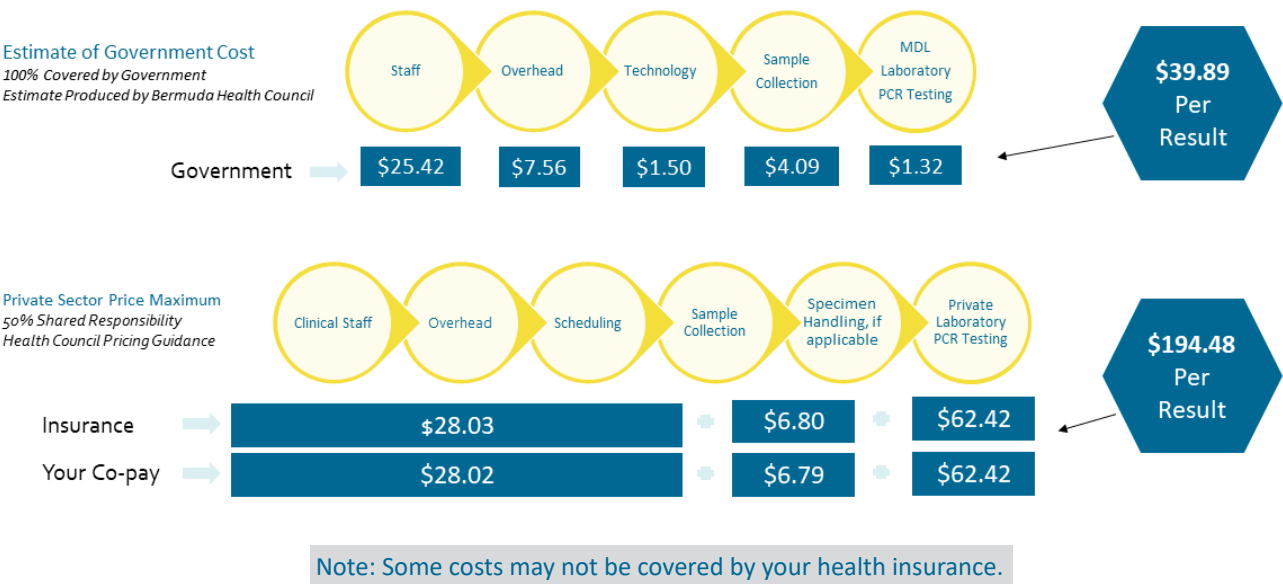
TESTING, VACCINATION & TREATMENT LOCATIONS

S = Specimen Collection
T = Testing (PCR, Antibody or Antigen)
V = Vaccination
R = Treatment
W = Walk-ins Allowed



HOW MUCH DOES TESTING, VACCINATION & TREATMENT COST?

PCR TESTING



ANTIGEN TESTING⁶

- » Government Sites - Free to Public
 - » Private Vendors⁷ - “Fair Price” cost \$5 - \$10 per test
 - » Current Private Market - \$Free - \$65.00*
- *Test with laboratory report



VACCINATION

- » Vaccine - Free to Public
- » Vaccine Injection at Government Site - Free to Public
- » Vaccine Injection at Private Site - \$26.32



MONOCLONAL ANTIBODIES

- » REGEN-CoV - \$2,350 per patient
- » Infusion or Injection at Private Facility - \$ Total Unknown



1. Ministry of Health Testing, (2020-2021) Novel Coronavirus (COVID-19). Government of Bermuda. www.gov.bm/coronavirus
2. Ministry of Health, (2020-2021) Quarantine & Contact Tracing. Government of Bermuda. www.gov.bm/covid-19-testing-key-facts
3. Government of Bermuda, (21 May 2021) SafeKey Guidance. www.gov.bm/promotions/safekey
4. Ministry of Health, (2020-2021) COVID-19 Testing: Key Facts. Government of Bermuda. www.gov.bm/quarantine-contact-tracing
5. U.S. Food & Drug Administration (23 September 2021) In Vitro Diagnostics EUAs - Antigen Diagnostic Tests for SARS-CoV-2. FDA. Source,
6. Test Kit Importation Form (2020) COVID-19 Test Kit Pre-approval Process. Government of Bermuda. www.forms.gov.bm/covid19/testkitapproval
7. Bermuda Health Council (1st October 2021) Approved COVID-19 Antigen Tests. BHEC. www.bhec.bm/approved-antigen-test