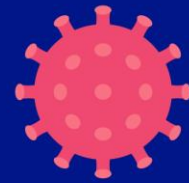


# COVID-19 (Coronavirus)



## Physical Distancing and Closure Schedule

Effective from 2<sup>nd</sup> May 2020, 6am

Version 7.0 (1<sup>st</sup> May)

The purpose of mitigation measures is to minimize COVID-19 transmission by limiting non-essential social movement.

**Curfew in place between 10pm and 6am daily. Permitted businesses may operate 7am to 9pm**

per Emergency Powers (Covid-19 Continuing Precautions) Regulations 2020

### Persons must limit daytime movement (6am – 10pm) during the Phase 1 re-opening period.

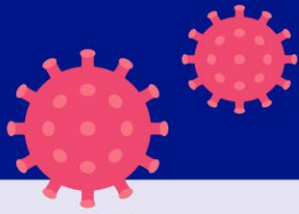
- Stay home. Move only if you need to.
- Any departure from your property should be for necessary business, exercise, assist a vulnerable person, purchase groceries or medications, or for healthcare. Social visits should be avoided.
- Gatherings over 10 persons are prohibited (in public places or private residences).
- At all times practice physical distancing of six (6) feet between persons.
- Wear a cloth / homemade face masks in indoor public places to protect others.
- Avoid using surgical masks, which are for healthcare. Never use N95 masks unless you are a healthcare worker in a healthcare setting.
- Employer must arrange for employees to work remotely from home using electronic means or otherwise, where practicable.

### When in a permitted business or making purchases at curb-side or deliveries, practice strict physical distancing:

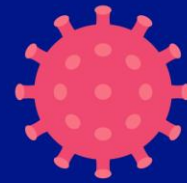
- Maintain a physical separation of 6 feet from others.
- Wear a cloth face mask at all times.
- Wash hands or use hand sanitizers entering and leaving the stores.
- Avoid cash transactions as much as possible and use a delivery option if available. Sanitize after using cash.
- If you bring your reusable bags, sanitize them first.
- Pack your own purchases so that fewer hands have touched your goods.

No.	Service	Component	Guidance
1.	<b>Government</b>	Covid-19-related (e.g. Health, Cabinet Office, National Security, Labour, etc.)	Operational for essential services with physical distancing
		Environmental Health, Vector Control and Safety and Health	Operational for essential services with physical distancing Vector Control: Normal operations regarding rodents and mosquitoes (with physical distancing). Environmental Health: All reactive work and routine sampling (complaints, food sampling, foodborne illness investigations, Covid-19 advisories etc.) Safety and Health: Complaints, accident investigations, Covid-19 advisories
		Post Office	Open Tues, Weds, Thurs 8am – 3pm with physical distancing





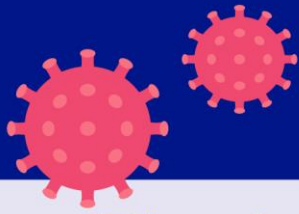
# COVID-19 (Coronavirus)



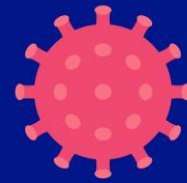
## Physical Distancing and Closure Schedule

No.	Service	Component	Guidance
		Other departments	Operational for essential services with physical distancing. Work from home where possible
		Cashier services	Open with physical distancing
		Counter services	Minimum operations for essential services only
2.	<b>Public Transportation</b> <ul style="list-style-type: none"> <li>Buses</li> <li>Ferries</li> </ul>	Operations / Maintenance	Limited Operations with physical distancing
		General Administration	Limited operations with physical distancing. Check schedules
3.	<b>Waste Management (Govt)</b> <ul style="list-style-type: none"> <li>Trash Collection</li> <li>Sewage Service</li> <li>Emergency call out</li> <li>Tynes Bay Drop off</li> </ul>	Garbage collection	Operational with physical distancing
		Operational / Maintenance	Operational for essential services with physical distancing
		General Administration	Minimum operations /Work from home
		Tynes Bay drop off	Open with physical distancing
4.	<b>Uniformed Services</b> <ul style="list-style-type: none"> <li>Bermuda Police Service</li> <li>Royal Bermuda Regiment</li> <li>BFRS</li> <li>Customs</li> <li>Immigration</li> </ul>	Enforcement / Fire Fighting / Medical	Operational with physical distancing
		General Administration / Support Services	Minimum operations with physical distancing / Work from home
5.	<b>Legal Affairs</b> <ul style="list-style-type: none"> <li>Judiciary (Courts)</li> <li>AG Chambers</li> <li>DPP</li> <li>HMC</li> <li>Court Services</li> <li>Child Family Services</li> </ul>	Court Appearances	Open with physical distancing
		Trials	Open with physical distancing
		General Administration	Operational for essential services with physical distancing. Work from home encouraged
6.	<b>Prisons</b>	Operational	Operational with physical distancing
		Visits	Not allowed
		General Administration	Open skeleton operation with physical distancing. Closed to the public
<b>PERMITTED BUSINESSES</b>			
7.	<b>Health Services including care homes</b>	Hospital	Open with physical distancing. Visits allowed <b>only</b> with permission by the hospital for critical cases and minors' parents
		Urgent Care Centre	Temporarily Closed (Staff transferred to KEMH)
		Healthcare services (includes medical & dental offices) Clinics, Veterinary	Open with physical distancing





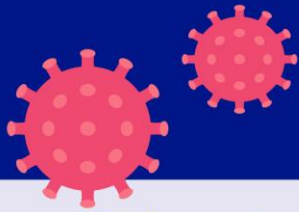
# COVID-19 (Coronavirus)



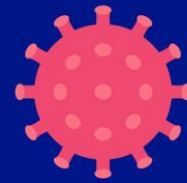
## Physical Distancing and Closure Schedule

No.	Service	Component	Guidance
		Pharmacies, Health supplies	Open with physical distancing. Number of shoppers inside a store must be restricted according to the size of the shop
		Care Homes (health and support staff)	Operational with physical distancing Visits not allowed
		Registered Home Care Providers	Operational. Standard precautions. Droplet precautions with symptomatic persons
		General Administration	Open skeleton operation with physical distancing
		Visits	Not allowed except for immediate family and clergy in the event of end of life
8.	<b>Supermarkets and Grocery stores</b>	Operations	Open 7am - 9pm with physical distancing. Staff must wear a mask.
		Buying necessities	Shopping will be on specific days by surname: A - F: Mondays and Thursdays G – Q: Tuesdays and Fridays R – Z: Wednesdays and Saturdays Seniors aged 65 and over, the disabled and “shielded” covid-vulnerable persons may go any day that corresponds to their last name. Sunday are reserved for aged 65 and over, the disabled and “shielded” covid-vulnerable persons only Groceries should not be bought for any period longer than seven (7) days Avoid taking children. Parents of young children without childcare may take their children Number of shoppers inside a store should be restricted according to the size of the shop Must wear a mask in public areas
		Deliveries	Allowed 9am - 9pm only with physical distancing Grocery deliveries must ensure that fresh, raw, and ready to eat foods are separately wrapped, and protected from contamination by dust, dirt or flies.
9.	<b>Banks</b>	ATM Service	Operational with physical distancing
		Online Services	Operational
		General Administration	Employer must arrange for employees to work remotely from home using electronic means or otherwise, where practicable
		Counter Services	Minimum operations with strict physical distancing





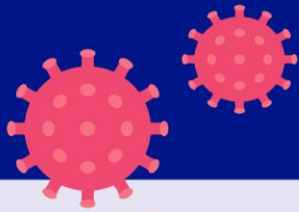
# COVID-19 (Coronavirus)



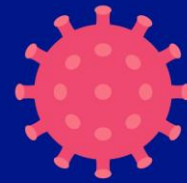
## Physical Distancing and Closure Schedule

No.	Service	Component	Guidance
10.	<b>Gas stations</b>		Operational 7am - 9pm with physical distancing. Shopping will be on specific days by surname: A - F: Mondays and Thursdays G – Q: Tuesdays and Fridays R – Z: Wednesdays and Saturdays Seniors aged 65 and over, the disabled and “shielded” COVID-vulnerable persons may go any day that corresponds to their last name. Sunday are reserved for aged 65 and over, the disabled and “shielded” COVID-vulnerable persons only Must wear a mask in public areas
11.	<b>Laundromats</b>		Open with written permission of the Minister of National Security. Only customers who are members of one same household to be allowed in the laundromat at any one time, by appointment only; A wash and fold service may be provided, so long as customers are not permitted to enter the premises during the drop-off or collection of their laundry.
<b>OTHER SECTORS</b>			
12.	<b>Schools</b>	General public	Closed
		Essential workers’ children	Open at Sammy Wilson Central Zone Community Centre on Angle Street with physical distancing
13.	<b>Day Care</b>	Homes and Centres	Closed
14.	<b>Religion</b>	Church Services / Weddings	Minimum with physical distancing Members of the clergy shall be permitted to enter a church or other religious establishment provided appropriate social distancing is maintained— (a) for private prayer (maximum of five persons); and
		Telecast Services	(b) in order to broadcast a service via electronic means (maximum of ten persons in total to conduct the service and facilitate the broadcast). Operational with strict physical distancing.
		Funeral Services / viewings	Allowed with physical distancing. Funerals (indoor and graveside), and viewings of the deceased, are permitted with a maximum of ten mourners, plus the officiant and funeral home staff, provided appropriate social distancing is maintained at all times.





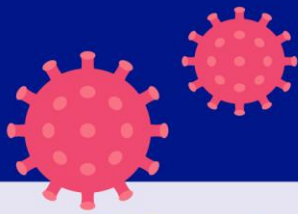
# COVID-19 (Coronavirus)



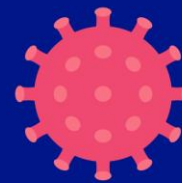
## Physical Distancing and Closure Schedule

No.	Service	Component	Guidance
15.	<b>Funeral directors</b>		Open with physical distancing. Max 10 people indoors or outdoors. Must wear a mask in public areas
16.	<b>Retail Businesses</b>	Shops, counter services	Closed
		Curb-side pick-up	Open 7am - 9pm with physical distancing. Customers not permitted to enter shops. All employees & customers must wear a mask
		Delivery Services	Allowed 9am - 8pm only with physical distancing. All employees must wear a mask A person making a delivery shall telephone ahead to ensure that the delivery can be received. A person making a delivery to a private residence shall not enter a customer's home, but shall— (a) leave the goods outside the customer's door; and (b) telephone or otherwise inform the customer that the delivery has been made. A person making a delivery shall not require a customer to sign for receipt of a delivery.
		Gas Supply, IT support	Open 7am - 9pm with physical distancing. All employees and customers must wear a mask
17.	<b>Restaurants and licenced food vendors</b>	Dine-in	Closed
		Take out	Open 7am - 9pm with physical distancing Only one customer at a time can enter the premises to collect or pay for an order
		Delivery	Allowed 9am - 9pm only with physical distancing Food deliveries must be separately wrapped, and protected from contamination by dust, dirt or flies.
		Cooking food for Charities	Open 7am - 9pm with physical distancing
18.	<b>Fishermen and farmers, including</b> <ul style="list-style-type: none"> <li>• Livestock</li> <li>• Animal feed</li> <li>• Pet stores</li> </ul>	Licensed fishermen including roadside sale of fresh fish	Allowed Monday to Saturday 7am - 9pm only with physical distancing. May sell fresh local fish roadside subject to the supervision of the Minister of Home Affairs Deliveries permitted per Regulations
		Registered commercial farmers including deliveries	Allowed Monday to Saturday 7am - 9pm only with physical distancing. May sell fresh local produce roadside, subject to the supervision of the Minister of Home Affairs Deliveries permitted per Regulations
		Animal feed wholesalers	Open 7am - 9pm with physical distancing
		Pet stores	Can only operate with the written permission of the Minister of National Security





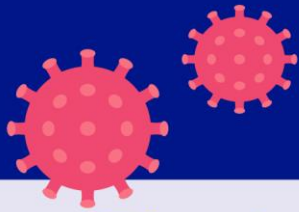
# COVID-19 (Coronavirus)



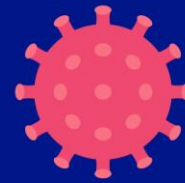
## Physical Distancing and Closure Schedule

No.	Service	Component	Guidance
19.	<b>Utilities, Telecommunications, etc.</b> <ul style="list-style-type: none"> <li>utility supply (electricity and domestic gas);</li> <li>water truckers;</li> <li>telecommunications, computer repair and internet service providers;</li> <li>plumbing and electrical repairs;</li> <li>repair of large appliances.</li> </ul>	Operations / Maintenance	Operational with physical distancing Permitted to respond to calls at any time (including during the curfew) for supply, restoration of service or repairs, provided appropriate social distancing is maintained at all times
		General Administration	Minimum operations with physical distancing / Work from home
		Counter services	Minimum operations with physical distancing
		Data Centre	Operational with physical distancing
		Call Centre	Minimum operations with physical distancing. Work from home
20.	<b>Media (Broadcast or Print Media)</b>	Operations and Information dissemination	Operational with physical distancing. Work from home where possible
		General Administration	Work from home
21.	<b>Wholesalers</b>		Operational 7am - 9pm with physical distancing. Staff must wear a mask.
22.	<b>Hotels / Airbnb /Guest Houses</b>	Accommodations operations	Allowed with physical distancing Quarantined guests confined to room Non-quarantined guests may use as normal
		Pool	Closed
		Gym	Closed
		Bars (indoors and outdoors)	Closed
		Restaurants – Dine in	Closed
		Restaurants – Take out	Open with strict physical distancing
		Kitchen	Open with strict physical distancing
23.	<b>Business Services</b>	Accounting, Non-Financial International Business, Law	Open only if working from home. Business must remain closed if employees cannot work from home
24.	<b>Construction &amp; Maintenance Services</b>	Including landscapers, painting, car mechanics, plumbing, HVAC, electrical and large appliances repairs	Open 7am - 9pm with physical distancing
		Pool cleaning	Open 7am - 9pm with physical distancing
25.	<b>Security</b>	Licensed private security officers	Open with physical distancing. Must wear a mask in public areas
26.	<b>Courier Services</b>		Open 7am - 9pm with physical distancing. Must wear a mask in public areas
27.	<b>Cleaning services</b>		Allowed for with strict physical distancing. Must wear a mask in public areas





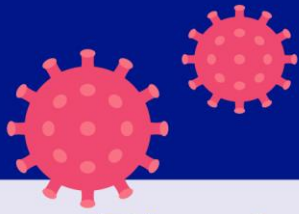
# COVID-19 (Coronavirus)



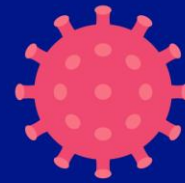
## Physical Distancing and Closure Schedule

No.	Service	Component	Guidance
28.	<b>Beauty salons /spas / barbers</b>		Closed
29.	<b>Gyms</b>		Closed
30.	<b>Sports / Concerts /Leisure</b>	Gatherings /Concerts/Clubs	Closed
		Solo exercise or sport	Allowed with physical distancing
		Outdoor group exercise	Allowed with physical distancing No more than 10 persons Contact team sports not allowed
		Golf courses	Open with physical distancing One person per golf cart
		Tennis courts	Open with physical distancing
		Sport Clubs (includes golf and tennis)	Closed
		Boating	Allowed 6am to 7pm Only persons who are members of the same household. Max 10 persons allowed on any one boat. No person shall tie a boat to another boat (raft-up) for recreational purposes.
31.	<b>Parks, trails, beaches</b>	Public parks, trails, beaches	Open with physical distancing
		Playgrounds & public workout stations	Closed
32.	<b>Cinemas and theatres</b>		Closed
33.	<b>Bars and clubs</b>	Social clubs/Bars/Night Clubs	Closed
34.	<b>Movement within country</b>	General public	Persons must limit daytime movement (6am – 10pm). Stay home. Move only if you need to. Any departure from your property should be for essential business, exercise, assist a vulnerable person, purchase groceries or medications, or for healthcare. Social visits should be avoided. Gatherings over 10 persons are prohibited. Movement prohibited 10pm – 6am, except for those allowed by the Regulations. During curfew must carry identification and show to an enforcement officer on request.





# COVID-19 (Coronavirus)



## Physical Distancing and Closure Schedule

No.	Service	Component	Guidance
		Visits	No person shall visit— (a) any place of quarantine or isolation; (b) a patient in a hospital, except with permission from the hospital; (c) a person in a residential care establishment or facility; (d) a detainee in a correctional facility, save for a member of the clergy and immediate family members in the event of an imminent expectation of the end of life.
		Essential workers	Unlimited movement for official business, working or travelling to and from work. Must carry identification and show to an enforcement officer on request
		Seniors over 70 years old	Discouraged except for essential business. Encourage shielding and supported to remain at home by care givers, neighbours and friends
		Medically vulnerable	Not permitted. Highly discouraged except for medical treatment. Must be shielded and supported to remain at home by care givers, neighbours and friends
		Exercise and pets	Allowed with physical distancing
		Visiting other's homes	Discouraged except to assist elderly or vulnerable relatives or neighbours
		Condominium swimming pools	Closed
35.	<b>Travel restrictions for residents</b>	Citizens leaving including business travel	Discouraged unless for emergency purposes
		Returning citizen, residents and dependent of residents	Allowed but must enter a Government quarantine centre for 14 days and be subject to public health monitoring and COVID clearance testing. Must wear a mask in public areas
		Non-residents leaving	Allowed with physical distancing. Must wear a mask in public areas
36.	<b>Foreign Visitor Entry</b>	Visitors	Not allowed except for those with diplomatic status, involved in providing essential services. Must quarantine for 14 days and be subject to public health monitoring
		Health personnel	Allowed but must quarantine for 14 days and be subject to public health monitoring. Must wear a mask in public areas

