



The 2014
IFC Power
Women Top
200



The 2014 IFC Power Women Top 200

The popularity of the IFC Power Woman Top 100 list in 2013 encouraged us to bump it up a notch. This year we are honouring 200 of the most powerful women in government, private wealth, private client advisory and philanthropy across the international financial centres (IFCs).

Listed alphabetically by jurisdiction and name, the list has been compiled from a

number of sources. Part of the research was generated by last year's list and the 2013 edition of the Citywealth Leaders List. This was combined with recommendations from leading figures in the financial service industry.

The list focuses on influencers as well as professionals and celebrates powerful women from diverse backgrounds. It recognises women of

achievement who are opinion formers, helping to promote business excellence in their home jurisdiction and consolidating the reputations of the financial services industry globally. We would like to thank those of you who contributed to the research and are inviting you to take a look at our 2014 IFC Power Women Top 200.

Compiled by Nimita Bhatt
nbhatt@citywealthmag.com



BAHAMAS

Aliya Allen

CEO at Bahamas Financial
Services Board

Michela E. Barnett-Ellis

Associate at Graham Thompson

Tanya Hanna

Partner at Graham Thompson

Glenys Hanna Martin

Minister of Transport and Aviation,
Government of the Bahamas

Pamela Klonaris

Consultant Attorney, Delaney
Partners

The Hon. Allyson Maynard Gibson

Attorney General, Minister Legal
Affairs, Government of the
Bahamas

Shira Newbold

Director, Client Services, Intertrust

Judith A. Whitehead

Managing Partner, Graham
Thompson

BARBADOS

Tara Frater



Associate Attorney-at-Law, Lex
Caribbean

*"I have found Ms. Frater to be
diligent, industrious and thorough."*

*"She exudes passion for every
endeavour she is involved in and
shows a keen interest in achieving
quality results."*

BELGIUM

Saskia Lust



Partner, Loyens & Loeff

Stephanie Markey

Attorney at Law/Associate,
Loyens & Loeff

Simone Nudelholc

Partner, Liedekerke Wolters
Waelbroeck Kirkpatrick

BERMUDA

Angela Burchall

Senior Trust Officer,
HSBC Private Bank

Helen Cooper

Partner, Private Client and Trust,
Conyers Dill & Pearman

*"Her work and judgement have
always been first rate."*

Linda Longworth

Managing Director, Hamilton Trust
Company



Vanessa Schrum

Local Practice Group Head of the
Private Client & Trust
Team/Partner at Appleby

*"She consistently meets our
deadlines, with her advice she is
exceptionally client friendly. She is
an adviser who makes you look
good with your clients, even when
the subject matter at hand can be
technically complex and a bit dry."*

Diane Stirling

Senior Trust Officer,
HSBC Private Bank

Lorren Wilson

Head of Private Client
Department, Cox Hallett
Wilkinson

Michelle Wolfe

Managing Director, Meritus

*"Her ability to bring people
together, her willingness to hold
very frank, honest conversations
with the client and her passion for
everything she does."*

BVI

Monique Adams

Head of Private Client, Harneys

Gwenyth D Vanterpool

Director, Harneys

Arabella di Lorio

Managing Partner, Maples and
Calder

Elise Donovan

Executive Director, BVI
International Finance Centre

Sheila George

Head of Private Client, Harneys

Valerie Georges-Thomas

Senior Associate, Bedell Group

Vanessa King

Partner & Head, Corporate &
Commerical Dept, O'Neal
Webster

Rachael McDonald

Partner, Mourant Ozannes

"Rachael is an extremely highly rated corporate lawyer in the British Virgin Islands. She is always responsive, commercial and professional in her dealings with clients and intermediaries."



Sharon Mungall

Associate (Corporate and
Finance), Carey Olsen

"Sharon is bright and very focussed on the commerciality of a transaction. She also has excellent communication skills."



Cora S. Miller

Counsel, Conyers Dill & Pearman



Willa Tavernier

Partner, O'Neal Webster

"Willa is knowledgeable, takes her clients instructions seriously and advises on complex issues in a clear, concise manner."

Sanchia Thompson

Managing Director, ATU General
Trust (BVI) Ltd

CAYMAN ISLANDS



Fiona Barrie

Chief Operating Officer, Elian



Monique Bhullar

Senior Counsel, Global Trusts
Group, Walkers Global

"Having worked for several years with a major Trust Company she is able to see both sides, and reacts in a way that is proper from a legal point of view."

Tamara Corbin

Partner, Rawlinson & Hunter



Andrea Dunsby

Partner, Turners

"Working with Andrea is a breath of fresh air – she has a way of putting the lay client at ease and explaining in a clear, understandable way. She is bright, personable & accessible and very importantly gets things done!"

Jackie E Stirling

Senior Resident Officer/Vice
President, Bessemer Trust Co

Lana Farrington

Director, Barclays Private Bank &
Trust



Leticia Frederick

Deputy Head, Fiduciary Services
Division, Cayman Island Monetary
Authority

Louise Groom

Partner, Harneys



Wendy Lee

Senior Associate (corporate &
commercial), Harneys Westwood
& Reigels

"Wendy Lee is a true thought leader, possessing that rare combination of intellectual and emotional intelligence. She harnesses her outstanding knowledge of corporate law to provide critical valuable insights on behalf of her clients."

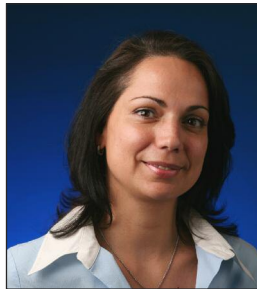


Morven McMillan

Partner and Head of International

Trusts & Private Client, Mourant
Ozannes

"Morven is the best in the business. What she does is exceptional and she is a huge resource on the trust side."



Sandra Nanni

Finance Director, Summit Trust
International



Ingrid Pierce

Global Managing Partner, Walkers
Global

"She has a huge amount of experience and great judgement, and is creative in the solutions that she comes up with."



Alyson Reilly

Senior Manager, KRyS Global

"Alyson is a bright and passionate leader in the offshore insolvency

field, and has combined her legal expertise and insolvency skills to uniquely deliver results and value to complicated situations and disputes."

Emma Santiago

Senior Manager, Rawlinson &
Hunter



Sheena Thompson

Regional Head of Operational
Risk, RBC Wealth Management

Ruth Yates

Senior Analyst, Cayman Islands
Monetary Authority

CYPRUS

Amalia Erotokritos

Partner, TP Law

Stella Kammitisi

Partner, Chryssafinis & Polyviou

Natasha Michaelides

Communications Director,
Thanos Hotels



Liza Loucaides-Theophanous

Lawyer , L. Loucaides-Theophanous LLC



Emily Yiolitis

Managing Partner, Harneys

Maria Zevedeous

Founder/Director/CEO, Aspen Trust

DUBAI

Leonie Kerswill

Partner, PWC LLP

Kerri Lefebvre



Director and Head of Office, Conyers Dill & Pearman Ltd.

"Kerri has in-depth legal knowledge of the main offshore

jurisdictions, she is highly responsive and quick to identify and address the main issues on a deal."

GIBRALTAR

Cecilia Bravo

Associate, Hassans

Cecile Gomez

Associate, Triay & Triay



Helen Gammons

Director and Relationship Manager, UBP

Joanne Wild

Associate, Cruz & Co

Christina Wright

Associate, Cruz & Co

GUERNSEY

Angela Calnan



Group Partner, Fiduciary, Collas Crill

"She is a very talented, able and

dedicated lawyer with a practical and efficient approach that commends itself to her many clients, and her particular understanding of and connections in the Middle East are also much valued in the firm."

Julia Church

Director, Intertrust



Shauna Clapham

Director, Swoffers Limited

Karen Cleal

Director and Company Secretary, Opus Private



Andréa Daley Taylor

Director, Trust Coporation International

"In our business reliability is key and Andie's dedication to getting things done right and on time is admirable and is a great advert for her and the firm."

Andy Finch

Head of Wealth Management, Canaccord Genuity Wealth Management



Elaine Gray
Of Counsel, Carey Olsen



Helen Green
Director, Saffery Champness

"Helen is extremely user-friendly in her approach, offering clear and concise practical advice. She provides ready support at all times and is very accessible."

Ciara Gurney
Director, Aquitaine Trust

Lesley Hodgson
Senior Director, Northern Trust

Jaqueline Hunter
Senior Trust Manager, Nerine Trust

Mandy Langmead
Director, RBC Wealth Management



Karen Le Cras
Partner and Head of Litigation, Carey Olsen

"The sensible and clear-thinking Karen Le Cras divides her time between commercial and trusts litigation and is said to have a bright future ahead of her."



Fiona Le Poidevin
CEO, Guernsey Finance

Fiona will be Chief Executive at the Channel Islands Securities Exchange (CISE) effective December 2014

Jane LeMaitre
Director, Intertrust



Alison MacKrill
Senior Associate, Carey Olsen

Jessica Morris
Director, Carey Trustees Limited



Alison Ozanne
Partner and Head of Dispute Resolution, AO Hall

"She is thorough, decisive and knowledgeable, providing good guidance and insight to us as client's of what to expect and likely outcomes of various strategies to be employed."



Lindsay Ozanne
Private Client Director, RBC Wealth Management



Alison Parry
Executive Director, Butterfield Trust

"Alison is an excellent trustee. She is extremely knowledgeable and goes to great lengths to understand the clients objectives."



Samantha Renouf

Head of Risk and Operations,
Butterfield Trust

"She has the force of personality, mastery of her brief, quickness of mind and sheer charm that gets her and her clients to where they need to go and in a very efficient manner."



Emma Roberts

Managing Director, Rothschild
Trust

"Emma is extremely dedicated, very client focussed and committed to delivering the highest levels of service at all times – and a joy to work with."

Haidée Stephens

Managing Director, Louvre
Fiduciary Group Limited

Sanna-Liisa Valtanen

Director, Asset Risk Consulting



Lisa Vizia

Director, Saffery Champness

"I have found Ms. Vizia to be diligent, knowledgeable, hard working, loyal and good at her job."

Sally Wilkinson

Managing Director, Harbour
Trustees

HONG KONG



Katie Graves

Partner, Wealth Planning, Withers
LLP



Mimi Hutton

Of Counsel, Withers LLP

"She is one of the leading International Estate Planners in Hong Kong. She practises with

the utmost integrity. She has warm approach to clients who are often squeamish about dealing with such issues."



Melanie Ison

Director, Nerine

"Her technical competence is excellent; however, more importantly her ability to hold a clients hand and steer them through issues which can be extremely complex is first class."

Jaqueline Loh

Senior Director, HSBC Trustee
(Hong Kong) Ltd

Silvia On

Registered Foreign Lawyer,
Stephenson Harwood



Li-Lee Tan

Counsel, Appleby



Frances Woo
Group Chairman and Managing
Director, Appleby

Silvia On
Registered Foreign Lawyer,
Stephenson Harwood

INDIA

Shefali Goradia
Partner, BMR Advisors



Richa Karpe
Co-Founder and Executive
Director, Altamount Capital
Management

Soumya Rajan
Founding Partner & Managing
Director, Waterfield Advisors

Pallavi Shroff
Head of Dispute Resolution and
Competition Law, Amarchand &
Mangaldas & Suresh A Shroff &
Co

ISLE OF MAN

Sheila Dean
Managing Director, Equiom Trust

*"Dean sets the standards where
others follow."*



Katherine Ellis
Business Development Director,
Boston Group Ltd.

*"She has an energy and
enthusiasm which is infectious
and has built a reputation for
client services and bespoke
solutions which helps to make the
Isle of Man a real centre of
excellence for yacht and aircraft
administration."*



Annemarie Hughes
Director and Head of Trusts and
Private Client, Dougherty Quinn
Advocates



Fiona Moore
Client Service Manager, Moore
Stephens Trust Company Limited

*"Fiona is an inspiration not only to
the Moore Stephens Isle of Man
team but also the wider fiduciary
services industry for what she has
achieved at such a relatively
young age."*

Chantal Pallot
Client Accountant (Pensions),
Fedelta



Ruth Robinson
Director, Boston Family Office
Management Ltd

*"Her breadth of expertise is
impressive and combined with a
deep understanding of the
family's businesses and interests
she has led an innovative office
which has prospered through the
economic cycle."*

ISRAEL

Shira Shine

Senior Partner, Head of Private Client, Michael Shine & Partners

"Shira is a very efficient, knowledgeable lawyer. She manages an excellent team in her office and together they've given and produced valuable proposals, leading to positive results."

Chana Solomon

Head of Department, BDO Israel

Daphna Talgam

Partner, Gornitzky & Co



Heather Bestwick

Independent Non Executive Director, Altair Partners



Barbara Corbett

Advocate, Partner and Head of Family Law, Hanson Renouf

"Having personally worked with Barbara, I have found her approach to be wonderfully refreshing. She understands and knows her law and has the ability to communicate this very effectively to her clients."



Cora Binchy

Head of Fiduciary, Stonehage Trust Holdings

Julie Coward

Chairman, First Names Group

Gillian Arthur



Director, Sanne Philanthropic Foundation



Louise Bracken-Smith

Managing Director, Fairway Group Ltd

Emma Dantec

Director, UBS Trustees (Jersey) Ltd

"Emma is an energetic and inspirational leader, well organised and respected by everyone within the industry."



Farah Ballands

Partner and Global Head of Fiduciary & Administration Services, Appleby

Bracken-Smith is a true trail blazer."

Christine Brown

Director, LGT Trustees



Felicia de Latt

Partner, Mourant Ozannes

Elizabeth Dulake

Director, Minerva Trust



Sally Edwards
Partner, Ogier Legal

"She is always willing to make time to see people at short notice and her turn around times are second to none. I would say she is the guru of the Jersey trust world."



Helen Gale
Partner, Deloitte LLP

Emily Haithwaite
Partner, Bedell

Sarah Hanna
Executive Trust Director, Kleinwort Benson



Saffron Harrop
Managing Director, JTC Group

"Saffron has a wealth of experience, excellent leadership skills and is truly committed to the

industry. These, along with her exceptional people skills, have enabled her to achieve successful partnerships and deliver a first-class service to our clients."



Helen Hatton
Managing Director, Sator Regulatory Consulting Ltd

"Helen is an experienced regulator with a broad range of experience on financial sector regulatory and compliance issues, risk management, and financial crime."



Zillah Howard
Partner, International Private Client Group, Bedell Cristin

"She demonstrates a rare and crucial ability to combine legislative insight with individual client and market needs. These qualities, combined with her impressive efficiency, have helped establish her as an indispensable and influential member of a number of key jurisdictional working groups."

Sarajane Kempster
Private Client Director, RBC Wealth Management

Liz Le Poidevin
Private Client Director, RBC Wealth Management

Joanne Luce
Managing Director, Aqua Group

Rosemary Marr
Senior Trust Professional, Nedgroup Trust

"She is a very powerful and well-respected figure in the trust and UHNW world. She has vast experience in this arena and her technical ability is excellent."

Alicia McGinney
Head of Private Family Office, MP Family Office

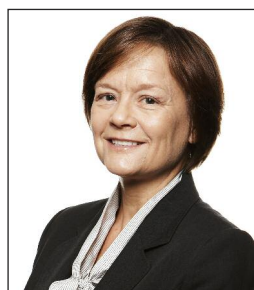
Sarah Mullins
Director, Aqua Group

Helen Munns
Managing Director, STM Fiduciare

Helen Ollivro
Director, UBS AG

Helen always maintains a positive outlook, resolving any issues that arise and taking the business forward."

Kathryn Purkis
Associate, Serle Court



Jacqueline Richomme
Partner, Mourant Ozannes



Naomi Rive
Chief Trust Officer, Coutts & Co
Trustees

Isabel Robins
Independent Director, Altair



Lisa Springate
Partner, Bedell Cristin

"She is a good lawyer with a very good balanced commercial approach and excellent client skills. She is very easy to work with."

Liz Taylor
Private Client Director, RBC
Wealth Management



Heather Tibbo
Director, Family Office Services,
Crestbridge

Charlotte Valeur
Independent Non Executive
Director, NTR Plc



Julia Warrander
Founder & Investment Director,
Affinity Private Wealth

"She is a pleasure to work with. She is very experienced in her field, dedicated, pro-active and both astute and pragmatic."



Fiona Whitehead
Trust Director and Head of New
Business, Coutts & Co Trustees

LUXEMBOURG



Katia Gauzès
Partner, Arendt & Medernach

Claude Medernach
Counsel, Arendt & Medernach

Simone Retter
Managing Partner, Retter
Attorneys

Marielle Stevenot
> Partner/Head of Employment
Law Practice, MNKS

Inessa Wendland
Associate Director, Perlectus

MALTA



Dr. Rosanne Bonnici
Partner, Fenech & Fenech
Advocates

Laragh Cassar
Partner, Camilleri Preziosi

**Louise Ellul Cachia
Caruana**
Partner, EMD Advocates



Dr. Annalise Micallef
Notary Public and Legal Advisor,
Micallef & Associates

Dr. Priscilla Mifsud Parker
Partner, Chetcuti Cauchi
Advocates



Geraldine Noel

Managing Partner, Acumum Legal Group

"Geraldine is very experienced in legal issues that have an international aspect and her knowledge spans a number of jurisdictions."

MAURITIUS

Rizwana Ameer Meea

CEO, Sphere Management

PANAMA

Dayra Berbey de Rojas

Partner, Icaza, Gonzalez-Ruiz Aleman

SINGAPORE

Grace Barki

Managing Director and Head of South East Asia, RBC Wealth Management

Tan Bee Lian

Senior Executive Director, TSMP Law Corporation

Jasmine Chew

Partner, Funds and Investment Management, Rajah & Tann



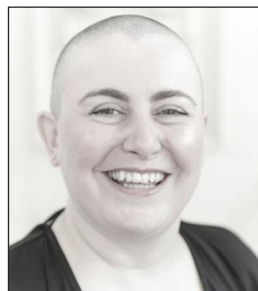
Stacy Choong

Partner, Wealth Planning, Withers



Wong Kai Yun

Co-Managing Partner, Chia Wong LLP



Michelle Le Herissier

Director, Head of Barclays Wealth Trustees (Singapore), Barclays Wealth Trustees (Singapore) Ltd

Ee Lin Chan

Adjunct Professor of Finance, Singapore Management University



Hilary May

Private Client Director, RBC Wealth Management

Britta Pfister

Head of Wealth Planning Asia, Rothschild Trust

Tan Su Shan

Group Head of Consumer Banking/Wealth Management, DBS Bank

Lee Syin Long

Head of Trusts, Walkers Global

Jennifer Tan

Managing Director, Portcullis Trustnet

Christine Tan

Director, Trust Services, Vistra

Joanna Yap

Partner, Tax & Private Client Practice Group, Khattar Wong

Stefanie Yuen Thio

Joint Managing Director, TSMP Law Corporation

SWITZERLAND



Kecia Barkawi

CEO and Founder, VALUEworks AG

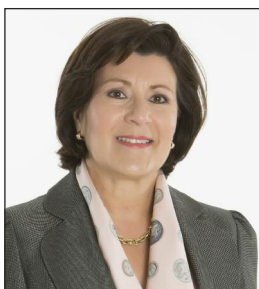
"Kecia is a truly world-class advisor, unfailingly providing technically sound, wise and prescient counsel. Her work ethic is exceptional and her attitude is uplifting"

Cécile Berger Meyer

Partner, Head of Real Estate, Lenz & Staehelin

Olga Boltenko

Partner, Withers Worldwide



Maria Canals de Cediel

Head Wealth Advisory, Managing Director, Quilvest

"She has shown herself to be very professional, reliable and knowledgeable."

Silbilla Cretti

Partner Owner, SGC Avocat



Nicole Curti

Partner, Head of Switzerland and Group Chief Operating Officer, Stanhope Capital

Ann Daverio

Executive Director, Banque Heritage

Diane de Galard

Director, Saga Investments

Caroline Deletra

Counsel, Lenz & Staehelin



Belinda Ferré

Executive Director, Team Head & Senior Relationship Manager, Bank J. Safra Sarasin Ltd

Olivia Furter

Associate, Schellenberg Wittmer

Claudia Giger

Private Banker, Cazenove Capital Management (Schroders)



Patricia Guerra

Partner and Head of Private Clients, Meyerlustenberger Lachenal Attorneys at Law

"One of the most important women in wealth."

Judith Ingham

Partner, Withers LLP



Tanja Jegger

Head of Philanthropy, Stonehage

Justine Markovitz

Managing Director, Withers LLP



Stella Mitchell-Voisin

Managing Director, Summit Trust International

"Stella makes complexity look like simplicity."

Dr. Claudia Sieber Peyer

Senior Relationship Manager,
Bank Vontobel

**Sabine Simkhovitch-
Dreyfus**

Partner, Cabinet Mayor

Nathalie Sutter

Partner, Executive Committee,
Kendris

Catriona Syed

Partner, Charles Russell LLP,
Geneva/London

"She is an outstanding tax, trust

*and art lawyer as well as an
exceptional counselor. She is
smart, mature, wise and very
practical."*



Clare Usher-Wilson

Director, Summit Trust
International

*"Usher-Wilson is the up and
coming generation arrived early."*



Tina Wüstermann

Partner, Bär & Karrer

*"Extremely bright, articulate and
personable."*

Marie-Noelle Zen-Ruffinen

Of Counsel, Tavernier Tschanz

Joelle Zumoffen-Fruterio

Partner, Cabinet Mayor

The 2014
IFC Power
Women Top
200



I F C 2 0 1 4

powerwomen

T O P 2 0 0

Gala evening: 22 January 2015



Citywealth is delighted to announce its awards programme to champion women in the wealth sector and highlight the female leaders of today and tomorrow. The awards spotlight individuals and companies who support care giving responsibilities, female leadership, and celebrate diversity.

Globally, women hold approximately one in five senior management roles, and fewer than one in ten businesses have a female CEO; of Financial Times top 500 companies, women represent 1.8% of CEOs and hold 10 % of board seats.

By working together and inclusively we can do so much more. Therefore, the Power Women Awards 2015 will both recognise individuals and companies who maximise the potential of women in wealth, and will also create a platform for best practice to collectively exercise positive social influence on the sector.

**For more information contact
Carmen Young
cyoung@citywealthmag.com
Tel: (0) 20 7487 5858**

Power Women Summit

Citywealth's first Power Women Summit, 22-23 January 2015, 10am to 4pm, City Grange, St Pauls, London Businesswomen around the world all hold part of the puzzle we are trying to solve. Citywealth is just one platform of opinion and seeks collaboration to help move this topic forward. Many of you have had different experiences, some wonderful, some difficult.

Citywealth seeks to collaborate and share your information with the wealth market in a two-day event which will take place on 22nd and 23rd January 2015 in London.

The first Power Women Summit, the event will look at the concept of sponsorship and the skills senior women and women under their care will need to succeed. This will include leading advice from professors at the LSE and dynamic key note speakers.

The event is opened to senior wealth managers and advisors and also senior women in international financial centres, all with 15 plus years in the industry, in more diverse careers but who are connected to the wealth sector.

**If you'd like more information
contact Tzvetelina Petkova
tpetkova@citywealthmag.com
Tel: (0)20 7487 5858**

Power Women Lunch

Citywealth's second Power Women Lunch, Monday 26 January 2015
12.00-15.00 Grange City Hotel,
London

12.00-12.30: Welcome drinks
networking
12.30-14.30: Lunch – 2 Key note
speakers + special guest panel +
questions
14.30 -15.00: Coffee Networking

Individual ticket £325 + vat or £3,000
+ vat for a table of 10, Front of room
position

The ticket/s include(s) a
complimentary copy of Citywealth
Power Women Report, an in-depth re-
search on women in wealth
management and international
financial centres prepared earlier this
spring with help from Dr Alexandra
Beauregard of the LSE. The research
involved 153 female participants
representing 123 firms across the UK,
Jersey, Guernsey, Switzerland, the
Caribbean and Bermuda.

**For more information contact
Carmen Young
cyoung@citywealthmag.com
Tel: (0) 20 7487 5858**

Power woman of Sudan

Coming from a poor country, with no education and not a lot of money is difficult. But what if it's a life or death situation? Fayza, a Sudanese mother of five children gave birth to twins who were conjoined at the hip and chest. She only found out when they were born, and to have a chance to keep them both alive and go through therapy, the entire family moved from Sudan to London.

Fayza went to the hospital almost every day for years to give the twins the necessary care, both survived and now are graduates from university. Fayza's daughter, Mona was inspired by her childhood experience and this was the basis for her wanting to become a paediatrician. A dream she fulfilled herself, she started out at a public school in a poorer London neighborhood and eventually graduated from Imperial College. Fayza continues to be a driving force and 'COO' of her wider family – a true power woman.

Education is key for contributing to a country's development and Baer Karrer are supporting a charity project of the development of an elementary school opening in Omdurman, Sudan. This means that children who come from very poor families will be able to attend school by subsidising their school fees. All donations are invested in the schools and Baer Karrer promise that every donor will receive a hand-made Mr. Monkey, made by volunteers who want to help the charity project.

Compiled by Nimita Bhatt



Fayza with her daughter Mona and her newly born granddaughter Nina



Fayza with her sons, Hassan and Hussein, at their graduation in England

For more information about the project, please visit
<http://hassaneinschool.com/> and <http://mrmonkey.ch/>

Charity supported by Bär & Karrer