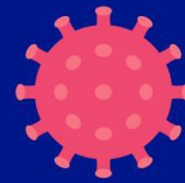


COVID-19 (Coronavirus)



Social Distancing and Closures Schedule

Shelter in Place Closures Effective from 4th April 2020

Version 6.0 (4 April 2020, 12pm)

In accordance with Emergency Powers (COVID-19 Shelter in Place) Regulations 2020

The purpose of Shelter in Place is to minimize COVID-19 transmission by restricting non-essential social movement.

Limited movement is allowed from 7am to 7pm for essential tasks.

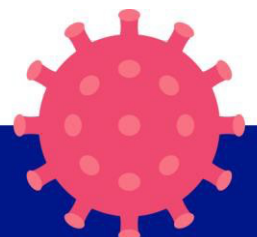
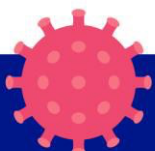
Persons must remain on their properties during the Shelter in Place period.

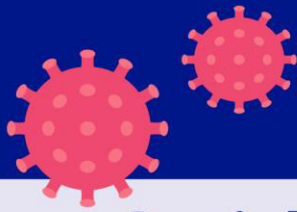
- Any lengthy departure from your property can only be for the purchase of groceries, collection of essential medications or to seek essential healthcare.
- During the times of essential movement, everyone must practice social distancing of six (6) feet between persons.
- The use of cloth and homemade face masks is recommended for all persons whilst in indoor public places to protect others from possible infection.
- Avoid the use surgical masks if possible, as these supplies are best reserved healthcare settings.

When making essential purchases in grocery stores, pharmacies and gas stations, practice strict social distancing:

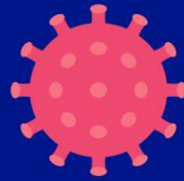
- Maintain a physical separation of 6 feet from other shoppers. Wearing a cloth face mask is recommended.
- One member of the household at a time is recommended if possible.
- Wash hands or use hand sanitizers entering and leaving the stores.
- Avoid cash transactions as much as possible and use a delivery option if available. Sanitize after using cash.
- If you bring your reusable bags, sanitize them first.
- Pack your own purchases so that fewer hands have touched your goods. Only buy what you need.

No.	Service	Component	Guidance
1.	Government	Covid-19-related (e.g. Health, Cabinet Office, National Security, Labour, etc.)	Operational for essential care with social distancing
		Other departments	Minimum operations with social distancing/work from home. Essential officers permitted with exemption from Head of the Public Service
		Counter services	Closed



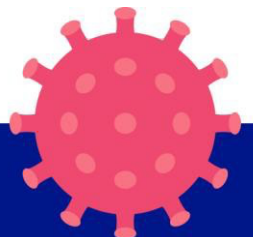
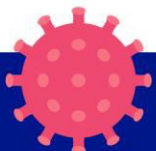


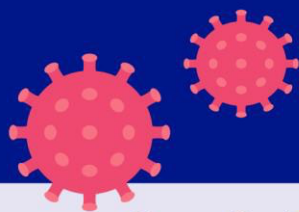
COVID-19 (Coronavirus)



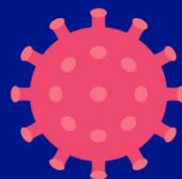
Social Distancing and Closures Schedule

2.	Banks, Financial Institutions, Corporate Businesses	ATM Service	Operational with social distancing
		Online Services	Operational
		General Administration	Work from home, except "Permitted Businesses" per Shelter in Place Regulations 2020 and essential officers permitted with exemption from National Security or Minister of Finance (for Financial Services). With social distancing
		Counter Services	Closed
3.	Schools	General public	Closed
		Essential workers' children	Open at Sammy Wilson Central Zone Community Centre on Angle Street and Cedarbridge Academy with social distancing
4.	Day Care	Homes and Centres	Closed
5.	Uniformed Services <ul style="list-style-type: none"> Bermuda Police Service Royal Bermuda Regiment BFRS Customs Immigration 	Enforcement / Fire Fighting / Medical	Operational with social distancing
		General Administration / Support Services	Minimum operations with social distancing / Work from home
6.	Legal Affairs <ul style="list-style-type: none"> Judiciary (Courts) AG Chambers DPP HMC Court Services Child Family Services 	Court Appearances	Closed (subject to further direction from the Chief Justice and Senior Magistrate)
		Trials	Closed (subject to further direction from the Chief Justice and Senior Magistrate)
		General Administration	Closed (subject to further direction from the Chief Justice and Senior Magistrate)
7.	Prisons	Operational	Operational with social distancing
		Visits	Not allowed
		General Administration	Open skeleton operation with social distancing. Closed to the public



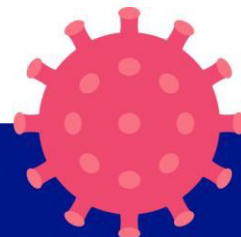
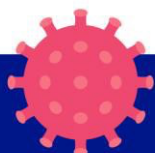


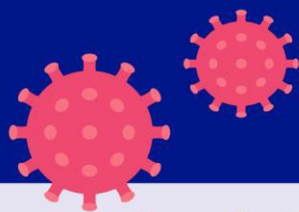
COVID-19 (Coronavirus)



Social Distancing and Closures Schedule

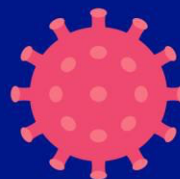
8.	Health Services including care homes	Hospital	Operational for essential care with social distancing. Visits allowed only with permission by the hospital for critical cases and minors' parents
		Urgent Care Centre	Temporarily Closed (Staff transferred to KEMH)
		Healthcare services (includes medical & dental offices) Clinics, Veterinary	Operational for essential care with social distancing
		Pharmacies, Health supplies	Operational for essential care products with social distancing. Number of shoppers inside a store must be restricted according to the size of the shop
		Care Homes (health and support staff)	Operational with social distancing Visits not allowed
		Registered Care Home Providers	Operational. Standard precautions. Droplet precautions with symptomatic persons
		General Administration	Open skeleton operation with social distancing
		Visits	Not allowed except for immediate family and clergy in the event of end of life.
9.	Waste Management (Govt) <ul style="list-style-type: none">• Trash Collection• Water Service• Sewage Service• Emergency call out• Tynes Bay Drop off	Garbage collection	Operational with social distancing
		Operational / Maintenance	Operational for essential services with social distancing
		General Administration	Minimum operations /Work from home
		Tynes Bay drop off	Closed
10.	Electricity Supply <ul style="list-style-type: none">• Emergency Call out	Operational / Maintenance	Operational with social distancing
		General Administration	Minimum operations with social distancing / Work from home
11.	Media (Broadcast or Print Media)	Operations and Information dissemination	Operational with social distancing
		General Administration	Work from home
12.	Telecommunication Services	Operations / Maintenance	Operational for emergency services ONLY with social distancing
		General Administration	Minimum operations with social distancing / Work from home
		Counter services	Closed
		Data Centre	Operational with social distancing
		Call Centre	Work from home





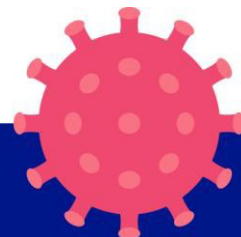
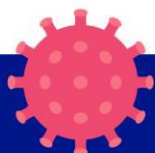
COVID-19

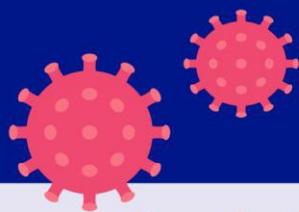
(Coronavirus)



Social Distancing and Closures Schedule

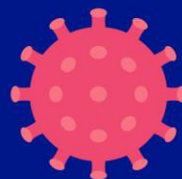
13.	Public Transportation • Buses • Ferries	Operations / Maintenance	Closed
		General Administration	Closed
14.	Food Suppliers • Restaurants • Small Businesses / Food Trucks	Food	Closed
		Take away	Closed
		Delivery	Closed
		Cooking food for Charities ONLY	Operational with strict social distancing
15.	Food production • Agriculture, livestock • Fishing • Animal feed	Registered commercial farmers	Operational with strict social distancing
		Licensed fishermen	Operational with strict social distancing
		Animal feed wholesalers	Operational for pickup only with strict social distancing
		Retail Markets and market stalls	Closed
16.	Supermarkets and Grocery stores	Operations	Operational with social distancing. Subject to curfew hours
		Buying necessities	Subject to curfew hours Number of shoppers inside a store must be restricted according to the size of the shop Groceries should not be bought for any period longer than seven (7) days. From 6th April, shopping will be on specific days according to your surname: A - L: Mondays, Wednesdays and Fridays M - Z Tuesdays Thursdays and Saturdays Seniors & the disabled may go any day that corresponds to their last name. Sunday will be reserved for seniors & the disabled only
		Deliveries	Allowed subject to subject to compliance with directions published by the Minister of National Security on the website coronavirus.gov.bm
17.	Wholesalers		Open with social distancing to supply food & essential supplies to Permitted Businesses (7AM – 7PM)
18.	Religion	Church Services / Weddings	Closed.
		Telecast Services	Subject to curfew hours, members of the clergy shall be permitted to enter a church or other religious establishment, in order to broadcast a service via electronic means (maximum of five persons in total to conduct the service and facilitate the broadcast). Subject to Social Distancing.
		Funeral Services / viewings	Allowed with social distancing. Max 10 people indoors or outdoors





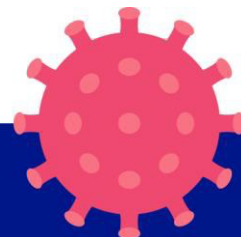
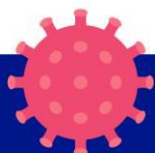
COVID-19

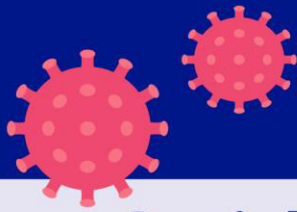
(Coronavirus)



Social Distancing and Closures Schedule

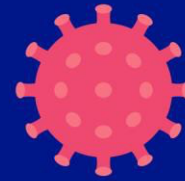
19.	Funeral directors		Open with social distancing. Max 10 people indoors or outdoors
20.	Hotels / Airbnb /Guest Houses	Accommodations operations	Open with social distancing Quarantined guests confined to room Non-quarantined guests may use as normal with social distancing
		Pool	Closed
		Gym	Closed
		Bars (indoors and outdoors)	Closed
		Restaurants	Closed
		Kitchen	Open for in-room dining with social distancing
21.	Beauty salons /spas / barbers		Closed
22.	Gyms		Closed
23.	Sports / Concerts /Leisure	Gatherings /Concerts/Clubs	Closed
		Golf Courses	Closed
24.	Cinemas		Closed
25.	Bars and clubs	Social clubs/Bars/Night Clubs	Closed
26.	Retail Businesses	Shops, counter services	Closed
		Pickup / Delivery Services	Closed
		Gas Supply, IT support	Emergency call-out only for essential needs only with social distancing
27.	Business Services	Accounting, Non-Financial International Business, Law	Working from home, except essential officers permitted with exemption from National Security or Minister of Finance (for Financial Services) with social distancing.
28.	Gas stations		Open with social distancing. Number of shoppers inside a store must be restricted according to the size of the shop From 6 th April, access will be on specific days according to your surname: A - L: Mondays, Wednesdays and Fridays M - Z Tuesdays Thursdays and Saturdays Seniors & the disabled may go any day that corresponds to their last name. Sunday will be reserved for seniors & the disabled only





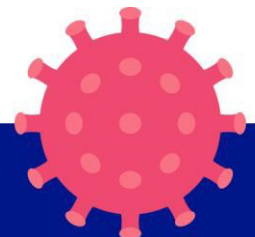
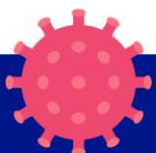
COVID-19

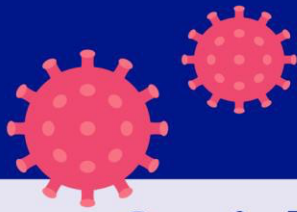
(Coronavirus)



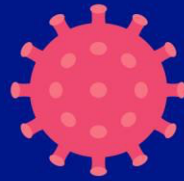
Social Distancing and Closures Schedule

29.	Construction & Maintenance Services	Including landscapers, painting, car mechanics, plumbing, HVAC and electrical	Emergency call-out for Permitted Businesses only with social distancing
30.	Security	Licensed private security guards	Open with social distancing
31.	Courier Services		Limited to services for Government deliveries, "Permitted Businesses", and essential services per Shelter in Place Regulations 2020 & Labour Relations Act 1975 with social distancing. Home deliveries are not allowed.
32.	Cleaning services		Allowed for "Permitted Businesses", and essential services per Shelter in Place Regulations 2020 & Labour Relations Act 1975 with strict social distancing
33.	Laundromats		Closed
34.	Movement within country	General public	Shelter in place imposed from 4 th April 2020. Persons will be only allowed to leave home to access "Permitted businesses" (including food, bank, health facilities, pharmacies, and gas stations)
		Essential workers	As per Shelter in Place Regulations 2020 , allowed only on official business, working or travelling to and from work, and all such persons shall carry Identification at all times and show to an enforcement officer on request.
		Exercise and pets	For a walk or run, alone or with one other member of the same household, for a maximum period of sixty minutes per day during the hours of 7am to 7pm only within 1 kilometre from their home.
		Visiting other's homes	Not permitted except to assist elderly or vulnerable relatives or neighbours, during the hours of 7am to 7pm only (except for an emergency situation)
		Public parks, All beaches and All playgrounds	Closed





COVID-19 (Coronavirus)



Social Distancing and Closures Schedule

35.	Travel restrictions for residents	Citizens leaving	Discouraged unless for emergency purposes
		Returning citizen, residents and dependent of residents	Allowed but must enter a Government quarantine centre for 14 days and be subject to public health monitoring
		Non-residents leaving	Allowed with social distancing
36.	Foreign Visitor Entry	Visitors	Not allowed except for those with diplomatic status, involved in providing essential services. Must quarantine for 14 days and be subject to public health monitoring
		Health personnel	Allow but must quarantine for 14 days and be subject to public health monitoring

